

# parkview

## COMMUNITY NEWSLETTER

### 2014 CHRISTMAS CRAFT & BAKE SALE

*By Louise Clarke*

*Another holiday season has passed and January delivered more spring-like weather than winter blues. I think back about how this winter began and I think....Parkview Christmas Craft and Bake Sale.*

*For this occasion we have come to expect blustery weather. I guess swirling snow just helps us get in the spirit! Despite cold, snowy, and slippery weather, Parkview never shy away from a great party. A steady stream of people passed through the doors to eat, shop and play. The horse-drawn wagon rides have never been busier and the vendors presented some exciting products of exceptional quality. It was a great opportunity to scoop up some wonderful and unique gifts.*

*Many children were clamouring to get into the action of various activities. The gingerbread house decorating, or shall we say candy eating, room was bustling with activity and on stage was a lively display of masterpieces by the budding artists who entered the colouring contest. We appreciate Santa Claus making sure his calendar was clear; he took in a great number of requests that day.*

*As in the past few years, we sold out of the delectable treats donated by our many friends. And some years it seems that getting one of those homemade pies is as elusive as winning the lottery. We hope to have a fix for that next time around, so expect more information as we get into the fall months.*

*In Alberta, Christmas and perogies go together like PB&J. So the experience is certainly not complete without Ukrainian lunch, which continues to be a significant draw for our guests.*

*cont'd on Page 6 & 7*



### *in this issue:*

|                             |     |
|-----------------------------|-----|
| Community Contacts          | 2   |
| Vice-President's Message    | 3   |
| Programs for Everyone       | 4   |
| Event Calendar              | 5   |
| Christmas Craft & Bake Sale | 6-7 |
| Preschool                   | 9   |
| Tot Time                    | 11  |
| Family New Year Party       | 13  |
| Sports                      | 14  |

SPRING 2014  
VOLUME 11 ISSUE 1

## NEWSLETTER DEADLINES

The Parkview Community League newsletter is published four times a year and distributed to members of the community.

Advertising and copy deadlines:

Spring: February 1 · Summer: May 1

Fall: August 1 · Winter: November 1

Advertising Rates:

Full back page . . . . . \$200  
(7 1/4" wide by 9" deep)

Full inside page . . . . . \$150  
(7 1/4" wide by 9" deep)

Half page . . . . . \$75  
(3 1/2" wide by 9" deep or  
7 1/4" wide by 4 1/2" deep)

Third page . . . . . \$50  
(7 1/4" wide by 3" deep)

Quarter page . . . . . \$40  
(3 1/2" wide by 4 1/2" deep)

Business card . . . . . \$15  
(3 1/2" wide by 2" deep)

Please note that we do not accept advertising inserts.

To submit articles contact:  
Denisa Leitch editor@pvcl.ca

To place ads contact:  
Louise Clarke advertising@pvcl.ca

# Parkview Community League Contacts

9135 146 STREET EDMONTON AB T5R 4L5

WWW.PVCL.CA

|                                |                              |              |                                    |
|--------------------------------|------------------------------|--------------|------------------------------------|
| <b>Board of Directors</b>      |                              |              |                                    |
| President                      | John Corie                   | 780-669-1557 | board@pvcl.ca<br>president@pvcl.ca |
| Vice President                 | Bryan Sandilands             |              | vicepresident@pvcl.ca              |
| Secretary                      | Ed Braun                     |              | secretary@pvcl.ca                  |
| Treasurer                      | Jeff Lucente                 | 780-455-4115 | treasurer@pvcl.ca                  |
| <b>Casino Coordinator</b>      | Melanie Lee                  | 780-970-8728 | casino@pvcl.ca                     |
| Community Rec. Coord.          | Stuart York                  | 780-944-5450 | stuart.york@edmonton.ca            |
| Craft & Bake Sales             | Louise Clarke                | 780-481-2842 | craftsale@pvcl.ca                  |
| Facilities Caretaker           | Tracey Kushniruk             | 780-221-5072 | caretaker@pvcl.ca                  |
| Hall Rentals                   | Debbie Braun                 |              | hallrentals@pvcl.ca                |
| Hall Sign                      | Tanya Gilbody                | 780-487-3192 | hallsign@pvcl.ca                   |
| Membership Coordinator         | Robin Hobal                  |              | membership@pvcl.ca                 |
| <b>Newsletter Advertising</b>  | Louise Clarke                | 780-481-2842 | advertising@pvcl.ca                |
| <b>Newsletter Distribution</b> | Christina Froberg            | 780-454-5040 | christinafroberg@hotmail.com       |
| <b>Newsletter Editor</b>       | Denisa Leitch                | 780-447-1844 | editor@pvcl.ca                     |
| <b>Preschool Contacts</b>      |                              |              |                                    |
| President                      | Jody Nickerson               | 780-434-9409 | playschool@pvcl.ca                 |
| Registrar                      | Kathy Newman                 | 780-634-4538 | registrar@pvcl.ca                  |
| <b>Rink Coordinator</b>        | Brian Mulder                 | 780-868-3017 | brian.mulder@telus.net             |
| <b>Seniors Coordinator</b>     | VACANT                       |              |                                    |
| <b>Soccer Coordinators</b>     |                              |              |                                    |
| Outdoor Older Teams            | Jaci Woolfson                |              | outdoorsoccer@pvcl.ca              |
| Outdoor Mini Teams             | VACANT                       |              |                                    |
| Indoor                         | Theresa Donauer              | 780-988-8933 | indoorsoccer@pvcl.ca               |
| <b>Special Events Network</b>  | John Corie                   | 780-669-1557 | president@pvcl.ca                  |
| Tot Time                       | Jill Vihos/Jenai Christensen |              | tottime@pvcl.ca                    |
| Website Editor                 | Graeme Bell                  |              | webmaster@pvcl.ca                  |



**parkview**  
COMMUNITY LEAGUE

Parkview Community League operates under the direction of an energetic board of directors, and several standing and ad hoc committees. The league is primarily comprised of volunteers whose collective effort makes our centre a beautiful and vibrant hub of activity in the community with a variety of yearly social events, in house programs, and third party social/fitness programs.

If you are interested in becoming a part of this exciting entity, the league would be happy to have you on board. Please contact us at: info@pvcl.ca or John Corie at 780-669-1557 or president@pvcl.ca



JOIN US ON FACEBOOK!  
www.facebook.com/Parkview  
CommunityLeague

# Vice-President's Message



When my wife, Gillian, and I moved to Parkview in 2007, we resolved to invest ourselves in this community, to better know our neighbours and our neighbourhood, and to do our share of heavy lifting. Of course, you may be aware that Parkview already has an Olympic team's worth of heavy lifters.



It is an apt metaphor, in that this league combines individual efforts for mutual support. They work together in order to achieve a vision for our neighbourhood that no one person could ever do alone. The difference is that instead of medals and recognition, they have a hand in crafting this community. The reward may sound abstract but it is not - not when on a daily basis you watch neighbours waving to each other, friends walking home from school together, and strangers assembling to contribute ideas and solutions to shared issues. Some call it community cohesion; others call it social capital. Either way, it is gold, and it is an active, purposeful process, rather than passive and accidental.

Children are often our ambassadors to community. We get involved for their sake but the benefits, truly, are ours. This has been the path for our family and it is what brought us to the Parkview Community League Annual General Meeting last fall. In addition to supporting facility operations and programming, there are two key assignments that I have committed to as part of my role with the League's executive: revising the by-laws of the Parkview Community League; and, completing a community-needs assessment.

The most recent by-laws of the Parkview Community League were registered on May 10, 1963 and while some of the clauses are boilerplate, many simply do not reflect the contemporary functions or structures under which most of the League's business is accomplished. Paragraph 40 states:

*The Constitution and By-laws of The Parkview Community League may be rescinded, altered, or added to only by extraordinary resolution passed at a general meeting of the members of the League,*

and so we will begin publishing sections of these revisions in future newsletters and/or on PVCL.ca, for your review. Our aim is to pass the new Constitution and By-Laws at the 2015 AGM.

The second task requires your participation. The City of Edmonton will assist in conducting a survey so that Community League members can plan priorities for future investment (i.e., where should the Parkview Community League invest its time and resources?). Please ensure your PVCL membership is current and active so that we have the means to hear from you.

Thank you to my predecessor, Brian Mulder, and to your current Board of Directors for its support. If you are the least bit interested in learning more about Parkview, I urge you to come to a meeting. The benefits will be mutual, I assure you.

Warmest regards,

Bryan Sandilands, Vice President  
Parkview Community League

P: (780) 498-2801

E: [vicepresident@pvcl.ca](mailto:vicepresident@pvcl.ca)

[www.pvcl.ca](http://www.pvcl.ca)



Parkview Community League will be hosting a casino on **March 26 and 27, 2015** at the Palace Casino and we are desperate need for volunteers.

This is a great opportunity to meet your neighbours and have a complimentary meal while raising about \$75,000 for our community league. That's almost \$1,800 from each volunteer!

Proceeds will be used to sustain our community building which provides us with a wonderful space to hold recreational and social activities, programs, and services.

We still need ~30 volunteers to make this a success. If you're over 18 years old, please sign up at [www.pvcl.ca/casino](http://www.pvcl.ca/casino).

### Parkview Community Center Rentals

For complete information visit our website:  
<http://pvcl.ca/hall-rentals>



As of January 1, 2015  
 main hall available Sunday  
 afternoons from 1 pm.

### Town Hall meeting with Ward 1 Councillor Andrew Knack

When: Tuesday, March 24, 6:30-9:00pm - doors open at 6:00pm

Location: West Meadows Baptist Church, 9333 199 Street

Everyone is welcome to attend this Town Hall meeting where Councillor Knack will provide updates on current issues in Ward 1. You will also have an opportunity to ask questions of the Councillor and bring up concerns in your communities.

For more information: [andrew.knack@edmonton.ca](mailto:andrew.knack@edmonton.ca) or phone 780-496-8122

## PROGRAMS FOR EVERYONE THIS SPRING AT PARKVIEW HALL

|                        |                              |  |            |              |
|------------------------|------------------------------|--|------------|--------------|
| Preschool              | Mon-Fri, AM & PM classes     | <a href="mailto:preschool@pvcl.ca">preschool@pvcl.ca</a> | Jody       | 780.486.7560 |
| Brownies               | Mon, 6:15 to 8:15pm          |  | Heidi      | 780.904.2570 |
| Tot Time               | Tuesdays, 9:00 - 11:00pm     | <a href="mailto:tottime@pvcl.ca">tottime@pvcl.ca</a>     | Jill/Jenai |              |
| Karate                 | Tues & Thurs. 5 - 8:30pm     | <a href="mailto:chowdavid@shaw.ca">chowdavid@shaw.ca</a> | David      | 780.695.5457 |
| Guides                 | Wed., 6:00-8:30pm            |  | Taletta    | 780.930.1109 |
| Barre Class w/Marjorie | Wed., 9:20-10:20am           | <a href="mailto:fitintl@shaw.ca">fitintl@shaw.ca</a>     | Marjorie   |              |
| Public Swimming        | 4 - 6 pm (Jasper Place Pool) |  |            |              |

# PVCL EVENT CALENDAR 2015

Please note: Events are subject to change, please check [www.pvcl.ca](http://www.pvcl.ca) closer to date for info

## January 2015

- Community League Meeting - Tue Jan 20

## February 2015

- Community League Meeting - Tue Feb 17
- Spring Newsletter Deadline - Feb 1
- Family Day Skate & Potluck Dinner - Feb 16, 2:30pm - 7:30pm

## March 2015

- Community League Meeting - Tue Mar 17
- Preschool Registration - Wed Mar 11, 7-8pm
- Casino - March 26 & 27
- Outdoor Soccer Registration - Mar 1 & 8, 6-8:30pm at the Hall

## April 2015

- Community League Meeting - Tue Apr 21

## May 2015

- Community League Meeting - Tue May 19
- Summer Newsletter Deadline - May 1

## June 2015

- Community League Meeting - Tue June 16
- Food Truck Event - Sat June 20, 4pm-11pm

## July 2015

- No Community League Meetings
- Green Shack at the Park
- Summer Programs at the Hall

## August 2015

- Fall Newsletter Deadline - Aug 1
- No Community League Meetings
- Green Shack at the Park
- Summer Programs at the Hall

## September 2015

- Community League Meeting - Tue Sept 15
- 3rd Annual Pancake Breakfast - Sat Sept 20
- Local Programs at the Hall Start:
  - Scouts/Girl Guides
  - Preschool
  - TotTime

Parkview Community League meets every third Tuesday of the month (no meetings in July/August). All members of our community are welcome to join!

## October 2015

- Community League AGM - Oct 20
- Parkview Preschool Dessert Auction - Oct 16, 7pm
- Halloween Party for Children - date TBD
- HALLOWEEN Ball for Adults - date TBD

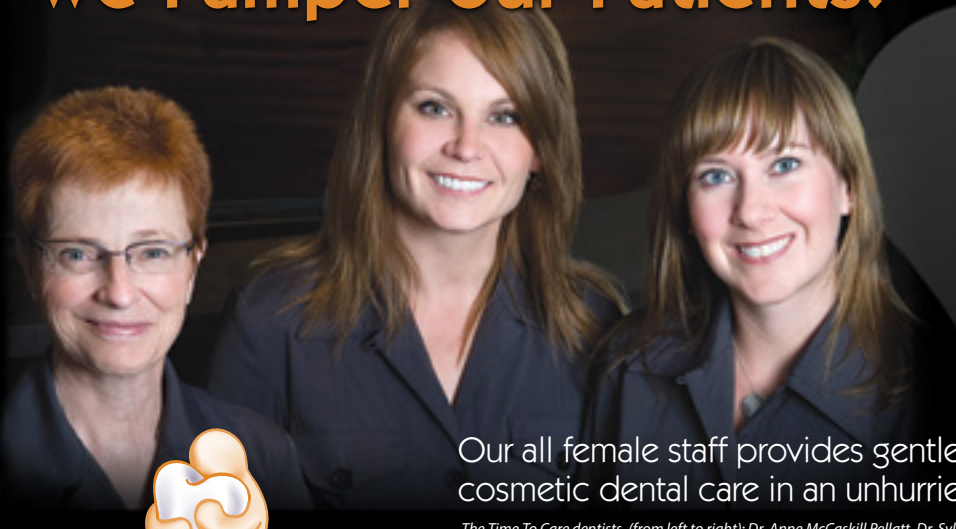
## November 2015

- Winter Newsletter Deadline - Nov 1
- Community League Meeting - Tue Nov 17
- Christmas Craft & Bake Sale - Nov 28

## December 2015

- Community League Meeting - date and location TBD
- Tottme Christmas Party for Children - date TBD
- Family New Year's Event - Jan 1

## We Pamper our Patients.



Suffering with snoring or sleep apnea?  
We now fabricate a simple appliance that may work for you

Our all female staff provides gentle family and cosmetic dental care in an unhurried environment.

The Time To Care dentists, (from left to right): Dr. Anne McCaskill Pellatt, Dr. Sylvie Renoir, Dr. Michelle Breault

  
**Time to Care**  
DENTAL GROUP

- We Direct Bill
- Open Evenings
- Invisalign
- Teeth Whitening
- Sedation Available
- Cosmetic Services (wrinkles, headaches, TMJ)
- Your Neighbourhood Dentists
- We Welcome Dr. Sihota to our team

[www.timetocare.ca](http://www.timetocare.ca) (780) 484-5918 Suite 209, 8708 - 155 Street, Edmonton, AB T5R 1W2



# 2014 CHRISTMAS CRAFT & BAKE SALE CONT'D

We are forever indebted to the remarkable ladies who make it happen. The Brenneis sisters – Debbie, Charlene, Sharon, and Donna – remain committed to this tradition. Along with their various donations, they made cabbage rolls and corn bread, and schlepped everything to the hall. Thank you for honouring your sister's vision — Valerie (Bright) would be so proud. Also thanks to Andrea Archimowitz and a very hard-working kitchen crew who toiled over the hot pots and kept steaming food sailing out the door in record time. Another big thanks goes out to CHEEMO who donated ALL of the perogies to our event this year. Bet you didn't even know they weren't Baba's.

We certainly are fortunate to have such strong ongoing support and generosity of businesses in our community as well. We really appreciate Andy's IGA for providing pound after pound of icing, gingerbread kits, and all around support for anything we ask for. Ajay at Signature Place Second Cup never declines our requests for coffee.

More strong support comes from all of you who have discovered abundant fellowship in working alongside friends and neighbours. We kept crews of volunteers employed throughout the week and event day hummed along smoothly with so many helping hands. I have also learned that around here, volunteerism knows no boundaries. We had several volunteers from neighbouring communities working at the sale and dropping off baking.

Throughout the day I heard so many positive comments about our little craft and bake sale. Vendors are awed by the community involvement as well as the spirit of goodness that infuses the hall. They are eager to be a part of this whole affair because of how great it feels and how great the people are. Congratulations everyone!

We have had a hugely successful event for the past 10 years. As I look to next year I hope to make a couple of changes for the next craft sale. But only those that will make it even better. Please watch for information in coming issues and on the web site.

On a final note, even though it's early, I already have my Christmas wish list ready:

Save the date for the next sale – November 28, 2015.

1. Everybody who missed the sale last year will make it this time.
2. No blizzard.
3. More pies.
4. More baking.

If you saw a vendor that you liked and want to make contact, please let us know and we will connect you. Email [craftsale@pvcl.ca](mailto:craftsale@pvcl.ca)

*Louise Clarke*  
2014 Craft & Bake Sale



Thank you to the 2014 Christmas Craft & Bake Sale committee for their time and ideas. I am forever grateful for the committee members for their help in making this event run like a well-oiled machine.

Lauren Starko – Table vendors

Jody Nickerson & Jennifer Assaly – Children's activities

Daphne Simkin – Volunteers

Susan Pasemko – Pies

Debbie Miniaci – Concession

Michelle Pollock, Carrie Candy, Tanya Gilbody, Gillian Culham, Tracey Kushniruk and Deb Braun for all of their extra help.

## Volunteers

We have a very long list of special people to thank. Thank you to everyone who came out to help out at the event. Some of you signed up and some of you just showed up and pulled up your sleeves. Those who couldn't make it sent kids or spouses in their place.

Thank you, Thank you, thank you.

|                    |                   |                  |
|--------------------|-------------------|------------------|
| Adam Goertzen      | Hannah Clarke     | Max Buchanan     |
| Ann Sinnott        | Heather Oga       | Michelle Pollock |
| Annissa Brodie     | Heather Clarke    | Mike Thompson    |
| Barbara Macdonald  | Heidi Benoit      | Nancy Davis      |
| Betsy Gilchrist    | James Candy       | Natasha Pasemko  |
| Brian Kiely        | Jennifer Assaly   | Nicholas Donauer |
| Carrie Candy       | Jennifer Keats    | Owen Goertzen    |
| Caslan Buchanan    | Jill Vihos        | Paul Naccarato   |
| Cathie Crooks      | Joanne Bruha      | Renee Chevalier  |
| Claudette Gourdine | Jody Nickerson    | Sarah Foy        |
| Connie Ellis       | Kaelin Wilk       | Shannon Chanin   |
| Court Davis        | Kathren McMaster  | Shelley Duggan   |
| Daphne Simkin      | Kim Donauer       | Tami Lackey      |
| Dave Buchanan      | Kristina Owen     | Tanya Gilbody    |
| Dave Owen          | Kyla Feschuk      | Tara Assaly      |
| Debby McCabe       | Laura MacLean     | Theresa Agnew    |
| Diana Kononenko    | Lauren Starko     | Theresa Donauer  |
| Erin Clarke        | Linda Piers       | Tom Clarke       |
| Gabriella Jensen   | Lorena Forster    | Vicky Bosse      |
| Georgia Simkin     | Mary Corie        | Wendy Wilk       |
| Gillian Culham     | Massimo Naccarato | Yvonne Seethram  |
| Grace Beaudin      | Matteo Naccarato  |                  |



**Youth Volunteers**

*Thank you to the student volunteers who spent the day assisting with children's activities.*

- |               |               |
|---------------|---------------|
| Josh Adshead  | Graham McCabe |
| Clark Ariota  | Ben Olsen     |
| Aidan Boyko   | Max Petryk    |
| Page Davis    | Katy Pownall  |
| Camren Lackey |               |



**Baking Elves**

*Thank you to our Baking Elves who brought in generous amounts of delicious treats. We know you enjoyed them!*

- |                    |                   |
|--------------------|-------------------|
| Amelie Fontaine    | Katherine O'Neill |
| Andrea Archimowitz | Kathy Newman      |
| Andria Ritter      | Kelly Petryk      |
| Annabelle Smith    | Lori Mandamin     |
| Bev LaBoucane      | Maggie Haag       |
| Carla Boyko        | Marcia Bercov     |
| Deb Braun          | Marie Corie       |
| Gabriella Jensen   | Mulder Family     |
| Heather Oga        | Natasha Pasemko   |
| Janie MacIvor      | Renee Chevalier   |
| Janine Beeston     | Shannon Chanin    |
| Jennifer Keats     | Susan Pasemko     |
| Jerome Thevenet &  | Tamara Drobina    |
| Voltaire Catering  | Tanya Gilbody     |
| Jill Vihos         | Theresa Donauer   |
| Jody Nickerson     | Theresa Agnew     |
| Judy Petryk        | Wendy Wilk        |
| Karen Smegal       |                   |





# FLAT WHITE

— AUTHENTIC —

Bold · Rich · Velvety · Creamy



---

A double shot of our celebrated Espresso Forte with velvety steamed milk folded in.

---

## ENJOY A FLAT WHITE ON US\*

\*Surrender this coupon to receive one free Flat White drink. No substitutions. Offer valid until Feb.28, 2015. Valid at 8906-149 ST NW Signature Place Café. Cannot be combined with any other offer. Second Cup reserves the right to revoke this offer. © Trademark of Second Cup Ltd.



jim dobie photography



587-987-4160



[jimdobiephotography@shaw.ca](mailto:jimdobiephotography@shaw.ca)

[www.jimdobiephotography.com](http://www.jimdobiephotography.com)

bringing the best in greek food  
to your business, home, or special event



With over 15 years of experience, I take it very seriously to personally ensure all my customers receive the highest quality and service.

Contact Theo@littlevillagefoodtruck.com 780-719-6424  
[littlevillagefoodtruck.com](http://littlevillagefoodtruck.com)   [littlevillagePT](https://www.facebook.com/littlevillagePT)



# MARK YOUR CALENDARS!

---

*By Jody Nickerson*



**Event: Registration Night for 2015 - 2016 school year**

**Date: Wednesday, March 11**

**Time: 7:00 pm – 8pm**

**Where: Parkview Community Hall Gym**

**What to bring:**

- ❖ **Administration Fee \$65**
- ❖ **First Month's Fee - \$90 for the 3 year old program, \$120 for the 4 year old program** (Please make cheques out to Parkview Playschool)
- ❖ **Calendar to mark down some important dates**

**Remember: Pre-registration Deadline for current students will be February 25<sup>th</sup>. Watch your child's basket for your forms.**

We will also be looking to fill some board positions for the new school year. Please look through our volunteer position list on the website.

If you have any questions or would like to print off the registration forms ahead of time, please go to [www.parkviewpreschooledm.com](http://www.parkviewpreschooledm.com) or contact:

Parkview Playschool President,  
Jody Nickerson, [jodyjnickerson@shaw.ca](mailto:jodyjnickerson@shaw.ca) or 780-434-9409

Parkview Playschool Registrar,  
Kathy Newman, [kjnewman@shaw.ca](mailto:kjnewman@shaw.ca)



Parkview Preschool  
2nd Floor of the Parkview Community League,  
9135 - 146 Street



JOIN US ON FACEBOOK!  
[www.facebook.com/ParkviewPreschoolPvclEdmonton](http://www.facebook.com/ParkviewPreschoolPvclEdmonton)



Do you want to revamp your current landscape? Don't know who to call? Well look no further. With over 25 years experience in the Edmonton area, **FANTASCAPES** is your one stop Landscape professionals. We specialize in complete yard renewals as well as new builds and we want to help you transform your yard into a place your family can enjoy for many years to come.

- \* PAVING STONE WALKS AND PATIOS
- \* CUSTOM DECKS, FENCES, PERGOLAS, ARBOURS, TRELLISES
- \* IRRIGATION & LIGHTING INSTALLATION
- \* STONE & WOOD RETAINING WALLS
- \* TREE AND SHRUB SERVICES
- \* TOPSOIL & SOD OR SEED
- \* CONSULTATION AND DESIGN



**BOOK NOW FOR 2015**

Phone: 780-756-1078

[WWW.FANTASCAPES.CA](http://WWW.FANTASCAPES.CA)



**TRUTH & EXCELLENCE**

# ST. ROSE

## CATHOLIC JUNIOR HIGH SCHOOL

# WELCOMING NEW STUDENTS

- Honours Language Arts
- Second Language and Culture Programming
- Accelerated Math and Science Program

8815 - 145 Street • 780 483-2695 • [www.strose.ecsd.net](http://www.strose.ecsd.net)

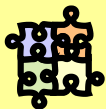
# FAMILY DAY

Skate &  
Potluck Dinner



MONDAY, FEBRUARY 16TH  
PARKVIEW COMMUNITY LEAGUE

Skating from 2:30pm  
Potluck at 5:00pm



## Melissa Campbell Speech Therapy Services

- Speech therapy for children age 0-18
- Offering help with pronunciation of speech sounds, language difficulties, functional communication
- Most health insurance plans have coverage for speech therapy services

Melissa Campbell, Registered Speech-Language Pathologist  
[melissacampbellspeech@yahoo.ca](mailto:melissacampbellspeech@yahoo.ca) 780-982-8889

## Babysitting

16 years old ♦ Responsible ♦ Grade 10 student

Red Cross babysitting and CPR course certificate

References upon request

Contact

JOYELLE SHAI GEC

Cell (587)-990-6636

Email: [joyelleshaigec@icloud.com](mailto:joyelleshaigec@icloud.com)

# PARKVIEW TOT TIME - COME JOIN US!

By Jill Vihos



Are you a parent or caregiver with a child under six? Do you have free time on Tuesday mornings? If you said yes to both questions, please consider joining us at the Parkview Community Hall for Tot Time!

Tot Time is long-standing volunteer program bringing parents, caregivers and preschoolers together in the Parkview Community.

This program provides an opportunity for toddlers and preschoolers to meet peers in the community while engaging in fun and physical activity. Tot Time also offers parents and caregivers a chance to create connections with community members.

Each Tuesday, Tot Time runs from 9-11am at the Parkview Community Hall. To attend Tot Time, an active community membership is required for insurance purposes. Memberships can be from any community in the city.

The Tot Time program follows the same format each Tuesday. From 9-11am, children engage in free play and craft construction. This is followed by snack time (please bring your own snack and drink) and song circle. Each week, we collect a small fee of \$1.00 per child. This payment is allocated toward operational costs including craft supplies and toys, and seasonal parties.

Tot Time would like to thank the families who helped contribute to the annual Tot Time Christmas and Holiday Party potluck. The children had a wonderful time decorating edible Christmas trees, creating festive crafts, and receiving a special holiday book and gift package.

We also extend a special thank you to Melissa Garcia, Wendy Wilk and Tracey Kushniruk for their contributions and support in helping with both the Halloween and Christmas parties!

Please join us at Tot Time, we look forward to seeing you!

Jill Vihos and Jenai Christensen





# JAMES CUMMING

Conservative Party of Canada Candidate for Edmonton-Centre

Edmonton-Centre is at the heart of a great and growing city, bursting with promise and opportunity for future generations. It's where my wife Debbie and I have raised our three children. It is also where I've built several successful businesses that have created jobs and opportunities for so many over the last 30 years.

I love this city and I want to give back to the community that has meant so much to me. That's why I'm running to be your next Member of Parliament. Every family in Edmonton-Centre deserves the best possible opportunities to succeed in whatever they do. But it's going to take the right leadership. Please consider getting involved and helping me bring this approach and your voice to Ottawa.

[www.jamescumming.ca](http://www.jamescumming.ca)

[James@jamescumming.ca](mailto:James@jamescumming.ca)

587.930.5779

 @CummingK  Elect James Cumming



# FAMILY NEW YEAR PARTY

---

*By Deb Braun*

*January 1st, 2015 was pleasantly mild with a high of four degrees. The great weather in combination with it being the first of a brand new year, was cause for celebration, and perfect reason for families of Parkview to get out and enjoy a time together. Approximately 60 people of all ages met at the community center that afternoon for skating, sliding, and hanging out in the playground. When toes started to get cold and noses turned red, the welcoming light and warmth of the community centre drew the outdoor enthusiasts inside for games and hot beverages.*

*Several interactive games got nearly everyone up on their feet, moving about and socializing while an array of gourmet food was being warmed and set out for a pot luck dinner. This included a variety of desserts, of course, featuring a couple of pans of hot-out-of-the-oven brownies from the brownie bake-off relay game.*

*Besides the games and great food, both children and adults enjoyed meeting and chatting with their neighbors from the community. Some of those in attendance are relative newcomers to the community and found the event to be a wonderful opportunity to get to know one another.*

*The event was a first for the community, and by all counts very well received. However the league would appreciate your feedback to assist in planning future events. Whether you were in attendance or not, your comments and/or suggestions will be welcomed. Please send correspondence to: [newyear@pvcl.ca](mailto:newyear@pvcl.ca)*



# SPORTS IN OUR NEIGHBOUHOOD



**YOU THINK YOU KNOW US, BUT YOU DON'T**

Come try our 60 minute, dance party workout

**Mondays & Wednesdays**  
9:30 am or 8:00 pm

13535-122 Ave.  
(Kirk United Church)  
Child Care Available for 9:30 am

[www.jazzercise.com](http://www.jazzercise.com)

For more info call 780-970-3650 or email [jazzercise.christine@gmail.com](mailto:jazzercise.christine@gmail.com)  
[facebook.com/JazzerciseChristineWorthing](https://facebook.com/JazzerciseChristineWorthing)

THE NEW JAZZERCISE



**Marjorie O'Connor**

**MOC Barre Class**

Wednesdays 9:20-10:20 am

Parkview Community Center

*Feel the Love*

[www.marjorieoconnor.com](http://www.marjorieoconnor.com)

Email: [fitintl@shaw.ca](mailto:fitintl@shaw.ca)



**PARKVIEW RINK IS OPEN**

HOURS:  
WEEKDAYS 2PM - 9PM  
WEEKENDS NOON TO 9PM

\* Skaters should be members of an Edmonton Community League. Get your membership [www.pvcl.ca](http://www.pvcl.ca) or <http://efcl.org/membership>



*Your Gardener*

780 • 240 • 2500

[gardener@telusplanet.net](mailto:gardener@telusplanet.net)

- Spring Clean-ups
- Weekly Maintenance
- Regular Care of Your Complete Landscape

## KARATE AT PARKVIEW COMMUNITY HALL



Practice of Karate will help to develop -

- friendships*
- respect*
- confidence*
- self-esteem*
- fitness*
- defense*

**FOR ALL AGES 5 YRS AND UP**

**(Adult only classes offered)**

**Call 780-695-KIKS**

**YEAR ROUND REGISTRATION!**



## February is outdoor soccer registration month

- Sunday March 1 at Parkview Hall, 6pm to 8:30pm
- Sunday March 8 at Parkview Hall, 6pm to 8:30pm
- Tuesday March 10 is the zone central registration at Doubletree by Hilton (Formerly the Mayfield Inn - 16615-109 Ave.) 6 pm to 9:00pm

Don't miss out. Mark your calendar!

All players must register with their respective zones. Complete zone details at emsamain.com



Soccer: Many goals. One game.

# WANTED

## Mini-Soccer Coordinator

We are looking for someone to coordinate the 2015 Parkview outdoor mini-soccer teams (U4 – U6)

If you are interested, please email [outdoorsoccer@pvcl.ca](mailto:outdoorsoccer@pvcl.ca) or call 780-903-1463

Thank you!

Jaci Woolfson  
Parkview Outdoor Soccer Coordinator



## NOTICE

### RE: Change in Parkview Indoor Soccer Registration Format

- Registration for Parkview Indoor Soccer for 2015/15 season
- Will be online only through EMSA west website ([www.emsawest.com](http://www.emsawest.com))
  - Will begin at end of June and remain open throughout the summer
  - Check EMSA west and PVCL website for details at end of June

## KEVIN CULHAM CHARTERED ACCOUNTANT

### SERVICES OFFERED

- Financial Statement Preparation
- Personal and Corporate Taxation
- Business Advisory Services
- Bookkeeping Services
- Estate and Trust Taxation

[www.kevinculham.ca](http://www.kevinculham.ca)

105, 14727 87<sup>th</sup> Ave, Edmonton, AB T5R 4E5 | 780.489.1460



Glenora • Crestwood • Parkview • Laurier Heights



# Wade Fenner

*Area Specialist*

Buying or Selling:

- Infills?
- Building Lots?
- Knockdowns?
- Luxury Homes?



Call Wade Now for a  
**FREE Home Evaluation**

**780-970-4545**

*Anytime, No Cost or Obligation*

[www.WadeFenner.com](http://www.WadeFenner.com)

This advertisement is not intended to solicit people or property under contract with another brokerage.

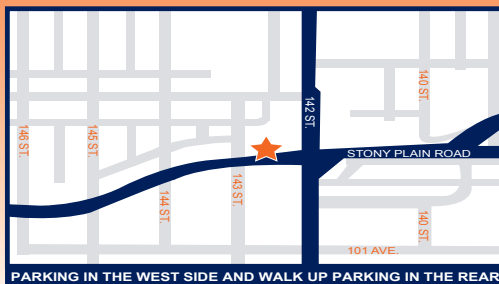




**Mac Registries**  
plates • searches • corporate

*Now Open*  
**OFFERING YOU**  
**License Plates**  
**Registration**  
**Searches**  
**Licensing**  
**Corporate**  
**Alberta Health**  
**& More!**

**14214 Stony Plain Road**  
**Edmonton AB T5N 3R3**  
**P: 780.705.1113 • F: 780.483.1835**  
**info@macregistries.ca**



PARKING IN THE WEST SIDE AND WALK UP PARKING IN THE REAR

meeting **ALL** of your home improvement and renovation needs  
**basements, plumbing, windows, demolition, bathrooms, electrical, doors, framing, kitchens, drywall, floors, finishing**

ph: (780)486-4035 or (780)498-2563



**Steve Young, MLA**

**Edmonton  
Riverview**

*Enhancing vibrant  
neighbourhoods through  
public safety and  
community engagement.*



**www.steveyoungmla.com**

**Constituency Office:**

9202B—149 Street  
Edmonton, Alberta T5R 1C3

Phone: 780-414-0719 Fax: 780-414-0721

edmonton.riverview@assembly.ab.ca



**ACKARD**  
contractors Ltd.

renovations & new construction

we can deliver the results you'll love.

call today to book an initial consultation

**780.414.0686**

www.ackard.com



## Edmonton Drillers Youth Soccer Club Outdoor 2015

**Registration for U8 and U10 programs!  
Registration for U12-U18 upcoming tryouts!**

Looking for an exciting outdoor season of high level soccer?  
Wondering where to excel with individual and team soccer skills?  
Want a challenging and competitive environment?  
Eager to have fun and become the best soccer player you can be?

**Our club is committed to developing our players and supporting them in the FUNdamentals of  
SOCCER!**



Watch our website for details: [www.edmdrillers.com](http://www.edmdrillers.com)

or

To register or for more information  
Contact the club registrar at [edmdrillersreg@shaw.ca](mailto:edmdrillersreg@shaw.ca)

# RENT IT. COMPLETE IT. RETURN IT.



## MATCH YOUR FLEET TO YOUR PROJECT LOAD.

Supplement your core fleet when you need to with high quality machines from the Cat® Rental Store. We have a full line of Cat machines and performance matched work tools to meet all of your jobsite needs.

Job requirements are constantly changing and although you might not have the right equipment on hand - we do! Rely on The Cat Rental Store to quickly supply the right tools for any task.



Don't have a QR Code Reader? Just open the mobile browser on your smartphone and visit [scan.mobi](http://scan.mobi).

866.285.5550  
[www.catrents.ca](http://www.catrents.ca)



[facebook.com/catrents](https://facebook.com/catrents)



[@catrents](https://twitter.com/catrents)



© 2012 Caterpillar All rights reserved. CAT, CATERPILLAR, their respective logos, "Caterpillar Yellow," the "Power Edge" trade dress as well as corporate and product identity used herein, are trademarks of Caterpillar and may not be used without permission.  
[www.cat.com](http://www.cat.com) [www.caterpillar.com](http://www.caterpillar.com)

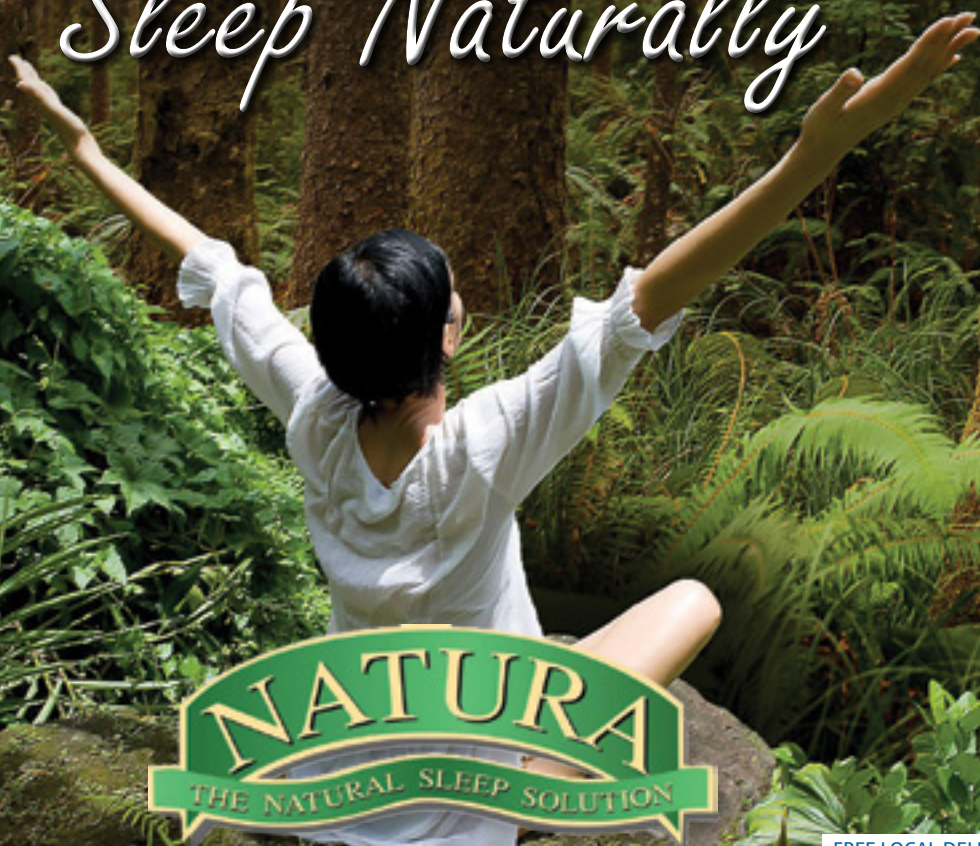
**WOOD**  
Sustainable | FSC Certified | Natural

**LATEX**  
Hypo allergenic | Supports Comfortable Sleep  
Posture Eliminates Pressure Points

**COTTON**  
Breathable | Sustainable | Fresh

**WOOL**  
Regulates Temperature | Buffers Pressure Points  
Hypo allergenic

# Sleep Naturally



FREE LOCAL DELIVERY AND SETUP

Proud Sponser of Riverview Hockey

**ROGERS**  
SLEEP SHOP

**SOUTH** 780-434-9388 **NORTH** 780-454-9820  
**3643 - 99 STREET** **12930 St. ALBERT TRAIL**  
Mon Tue Wed Sat: 10am - 6pm  
Thu Fri: 10am - 9pm  
Sun & Holidays: 12 - 5pm  
**FlexPay**  
Better than Layaway  
[www.rogerssleepshop.com](http://www.rogerssleepshop.com)

Is a move in your future?



If You Lived Near Here...  
You'd Be Home Now!

When experience matters, you can count on Les Phillips for proven results - guaranteed.

Call Les Phillips and discover how his unique marketing plan can benefit you in your next move.

**Les Phillips, Associate Broker**  
780-498-2648  
les@lesphillips.ca

Not intended to solicit properties currently listed.

## LAURIER LAW OFFICE

### YOUR NEIGHBOURHOOD LAW FIRM

*Quality Legal Services with a Friendly Approach*

A General Practice Firm Including:  
Real Estate, Family Law,  
Wills and Estate & Succession Planning,  
Enduring Powers of Attorney,  
Personal Care Directives,  
Incorporations, Estates,  
Immigration

8623-149 Street, Edmonton, Alberta T5R 1B3  
Telephone: (780) 486-0207 Fax: (780) 483-0848

**Linda L. Wright**

**Robert A. Kiss**  
**Joseph J. Boudreau**

**Gerald C. Bolton**  
**Katrina Pia D Angeles**

Barristers, Solicitors and Notaries Public  
Commissioners for Oath



PVCL WOULD  
LIKE TO THANK  
ANDY'S IGA FOR  
THEIR ONGOING  
SUPPORT OF  
MANY PARKVIEW  
EVENTS !!!



on a minimum purchase of \$50.00  
excluding tobacco and freezer orders



**ANDY'S VALLEYVIEW**

9106-142 Street, Edmonton, AB T5R 1M7

**YOUR COMMUNITY SUPERMARKET BAKERY & DELI**

**483-1525**

# EXECUTIVE SEARCH PERMANENT PLACEMENT SERVICES



**Accounting/Financial**  
**Construction Personnel**  
**Engineering**  
**Human Resource Management**  
**Insurance**  
**Legal/Secretarial**  
**Oil/Gas Industry Personnel**  
**Project Management**  
**Reception/Administrative**  
**Sales/Marketing**  
**Warehouse/Labour**

# IN DEMAND

## Recruitment and Consulting Inc.

tel **780.424.8505** • toll free 1.866.424.8505 • fax 780.424.8405  
Scona Station, 10128 - 80 Ave, Edmonton AB T6E 1T7 • [info@indemand.ca](mailto:info@indemand.ca) • [www.indemand.ca](http://www.indemand.ca)

***Meeting the demands of employers and job seekers around the Globe***

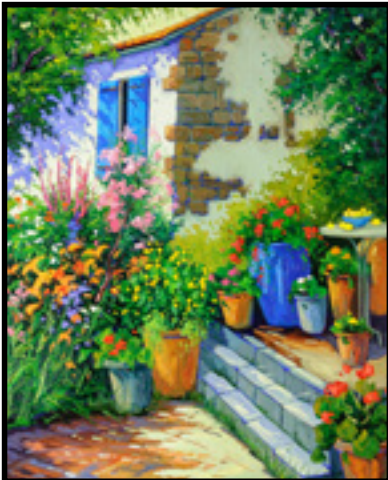


Michael Rozenvain

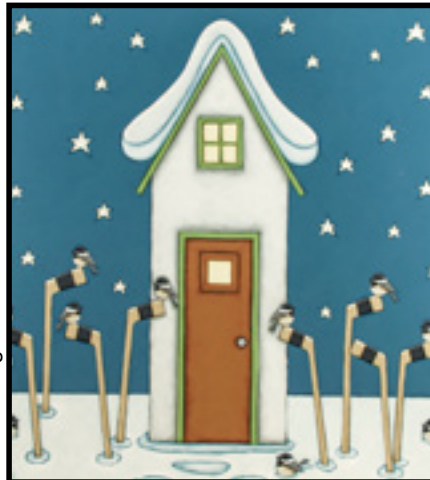
**We Are Moving!**  
Visit us at our new location  
starting March 1, 2015.  
**West End Gallery**  
**10337 124th Street**



Grant Leier



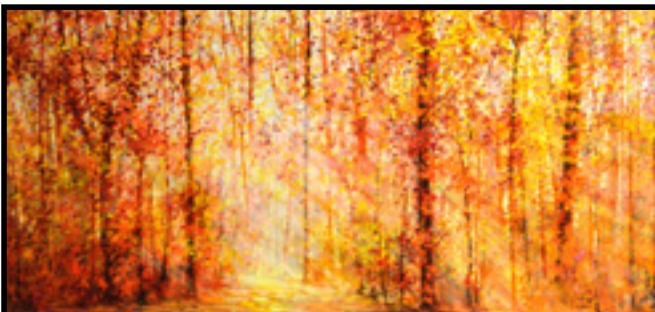
Robert Savignac



Peter Wyse



Joanne Gauthier



Bev Rodin



Richard Cole

**780 488-4892**  
**www.westendgalleryltd.com**





**Acclaimed!** Heating • Cooling  
Furnace Cleaning

**780 413-1655**

[www.acclaimedfurnace.com](http://www.acclaimedfurnace.com)



**KEVEN LACKEY**

As you read this issue, I'm hopeful the unseasonable January thaw continues into February and March.

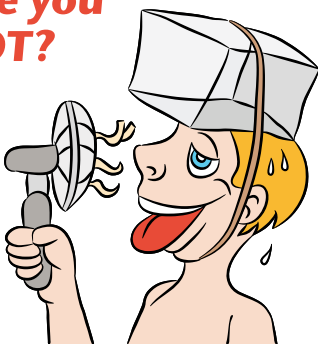
Enough with **needing** the furnace already! Spring into action before the hot weather arrives and get the most out of your A/C this year. **How to do your annual A/C maintenance?**

**Here's how:** Turn off the power to the furnace and A/C. Check and replace your furnace filter if required — check it monthly. Check the humidifier pad for calcium build up; replace if required and close its damper and valve. Flush the A/C evaporator coil

drain line (above furnace) with a bleach and water solution; check it for flow. Look at the underside of the evaporator coil and drain pan for debris or dust; clean if required. Make sure the A/C condenser (outside) is on a solid, level pad, with 2 feet of space around it. Inspect the condenser for debris and dust; vacuum as required and clean the coils with an approved coil cleaner; flush with water. Turn on the power to the furnace and A/C. With the thermostat in "cooling mode", test the A/C's operation; only when it's above 15 degrees outside. Now you're all set to be cool! Give us a call if you have any questions, or if your system requires service.

**FREE cased coil upgrade if new A/C is installed before March 31!**

**Are you HOT?**



**Call us for an A/C consult and estimate.**



**Be Cool :)**



- Furnaces
- Humidifiers

- Air Conditioning
- Furnace Cleaning

- Water Tanks
- IAQ Solutions

